

# Tuberculosis Data Brief 2024



Tuberculosis (TB) is a communicable, potentially fatal disease that usually affects the lungs but can attack other parts of the body as well, including the kidneys, spine, and brain. It is an airborne infection that is spread when a person with an active case of TB breathes out the disease-causing bacteria, which are then inhaled by another person. TB is curable, though new drug-resistant strains are appearing that are more difficult to treat. To prevent the disease from recurring in a drug-resistant form, nurses in the Guilford County TB control program use directly observed therapy protocols to ensure that patients are taking all medications as instructed.

## Key Findings from 2023 TB Data

- The number of TB cases declined from 19 cases in 2016 to 9 cases in 2023.
- **Over the past 20 years, TB rates in Guilford County have declined by 83.8 %**, dropping from 9.9 per 100,000 in 2003 to 1.6 per 100,000 in 2023.
- **Since 2019, TB rates in Guilford County have remained below 2.0 per 100,000, demonstrating sustained control efforts. Ongoing prevention, surveillance and control efforts are essential to protect those most vulnerable and the community at large.**
- In 2023, 55.6% of TB cases in Guilford County occurred among Asian residents, 33.3% were among White residents, and 11.1% were among African American residents. Additionally, 22.2% identified as Hispanic.
- 22.2% of cases were identified as being unhoused\* within the past year.
- 33.3% of cases identified the United States as country of origin, while 67% identified another country of origin.
- Among selected comparison counties, Guilford County had the lowest TB rate in 2023 (1.6 per 100,000), whereas Durham (3.3 per 100,000) and Mecklenburg (3.2 per 100,000) had the highest rates.
- In 2023, Guilford County reported a lower TB rate (1.6 per 100,000) compared to North Carolina (2.0 per 100,000) and the U.S. (2.9 per 100,000).

Note: \*Unhoused: Identified as homeless within the past year.

## Tuberculosis Cases and Rates, Guilford County, 2016 - 2023

Reportable Disease	2016		2017		2018		2019		2020		2021		2022		2023	
	Number	Rate	Number	Rate	Number	Rate	Number	Rate	Number	Rate	Number	Rate	Number	Rate	Number	Rate
Tuberculosis	19	3.6	21	4.0	17	3.2	11	2.0	10	1.9	10	1.8	11	2.0	9	1.6
Population	521,330		526,953		533,213		537,174		540,521		542,410		546,101		549,866	

Source: North Carolina Electronic Disease Surveillance System (NCEDSS).

Technical Notes: Rates are expressed per 100,000 population. Please note that rates based on small numbers (fewer than 20 cases) are unstable and should be interpreted with caution.

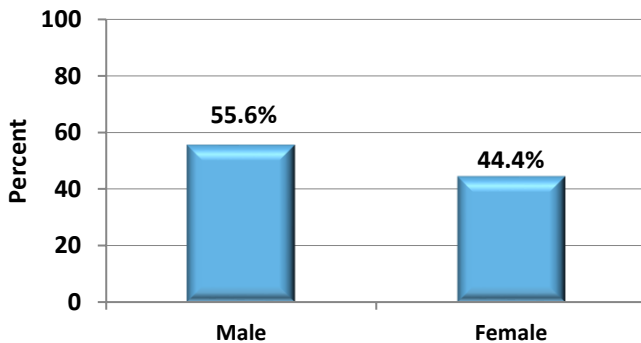
## Tuberculosis Cases and Percentages by Race and Hispanic Status, Guilford County, 2019-2023

	2019		2020		2021		2022		2023	
Race and Ethnicity	Number	Percent	Number	Percent	Number	Percent	Number	Percent	Number	Percent
American Indian/Alaskan Native	0	0%	0	0%	0	0%	0	0%	0	0%
Asian	2	18.2%	3	30.0%	1	10.0%	5	45.5%	5	55.6%
Black/African American	6	54.6%	5	50.0%	6	60.0%	2	18.2%	1	11.1%
Native Hawaiian/Pacific	1	9.1%	0	0.0%	0	0.0%	0	0%	0	0%
White	2	18.2%	2	20.0%	3	30.0%	4	36.4%	3	33.3%
<b>Race Total</b>	<b>11</b>	<b>100%</b>	<b>10</b>	<b>100%</b>	<b>10</b>	<b>100%</b>	<b>11</b>	<b>100%</b>	<b>9</b>	<b>100%</b>
Hispanic*	2	18.2%	1	10%	2	20%	2	18.2%	2	22.2%

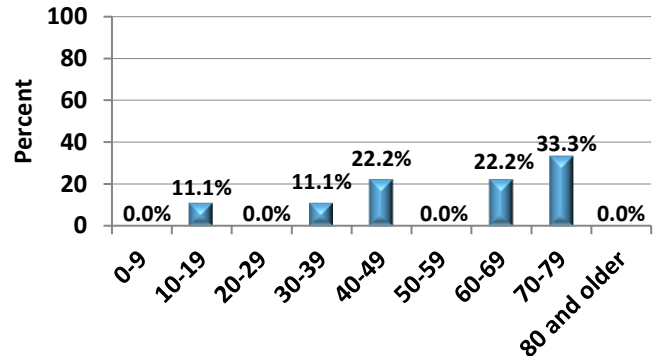
\*Hispanics can be of any race.

### Select Characteristics of 2023 Guilford County Tuberculosis Cases

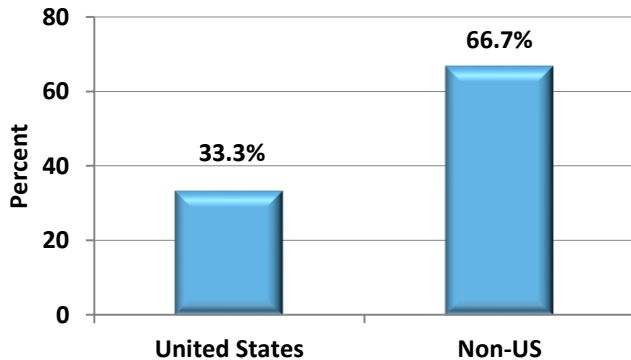
**Percent of Tuberculosis Cases by  
Sex, Guilford County, 2023**



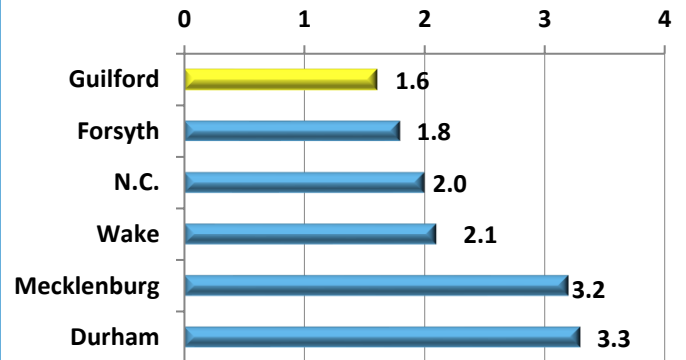
**Percent of Tuberculosis Cases by  
Age Group, Guilford County, 2023**



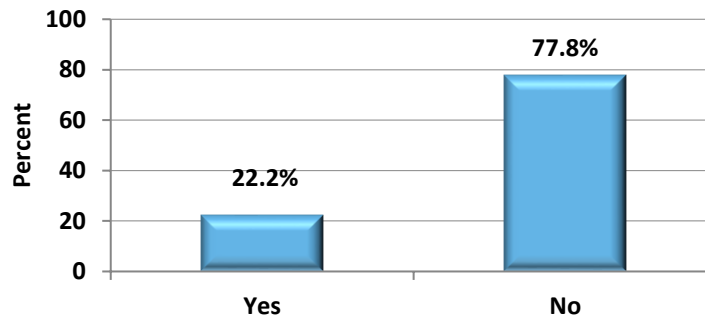
**Percent of Cases by Country of  
Origin, Guilford County 2023**



**Tuberculosis Rates per 100,000 for  
Selected Counties and NC, 2023**



### Percent of Cases Unhoused\* within the Past Year, Guilford County 2023

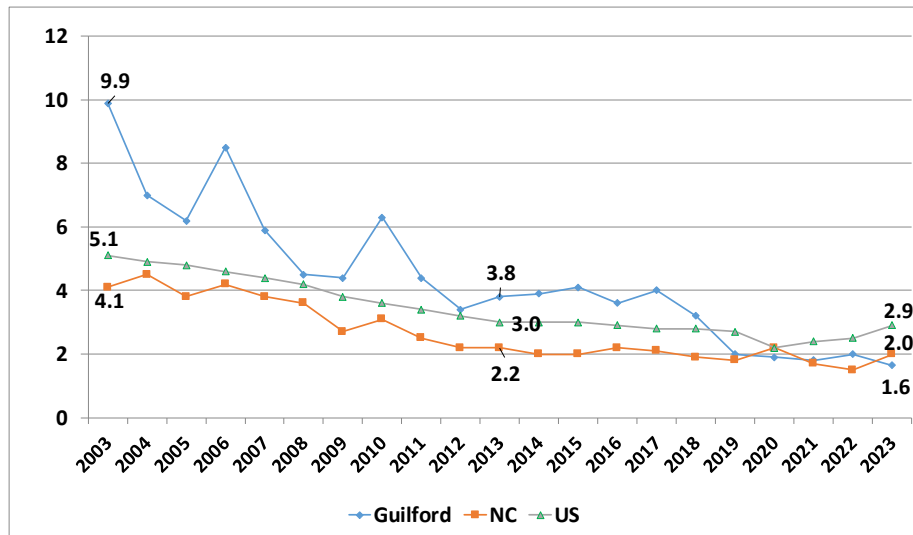


Note: \*Unhoused: Identified as homeless within the past year.

Source: North Carolina Electronic Disease Surveillance System (NCEDSS).

### Trends in Tuberculosis Incidence Rates Guilford County, NC and the US, 2003-2023

Rate per 100,000



Sources: NC Electronic Disease Surveillance System (NC EDSS), NC TB Control Program and Division of TB Elimination, Centers for Disease Control & Prevention.

This brief was prepared by the Health Surveillance and Analysis Unit of the Division of Public Health:  
Rimple Patel, MPH, Epidemiologist  
Laura Mroska, MPH, MSW, Community Health Educator

For more information about Guilford County health statistics, visit:

<https://www.guilfordcountync.gov/our-county/human-services/health-department/health-statistics>