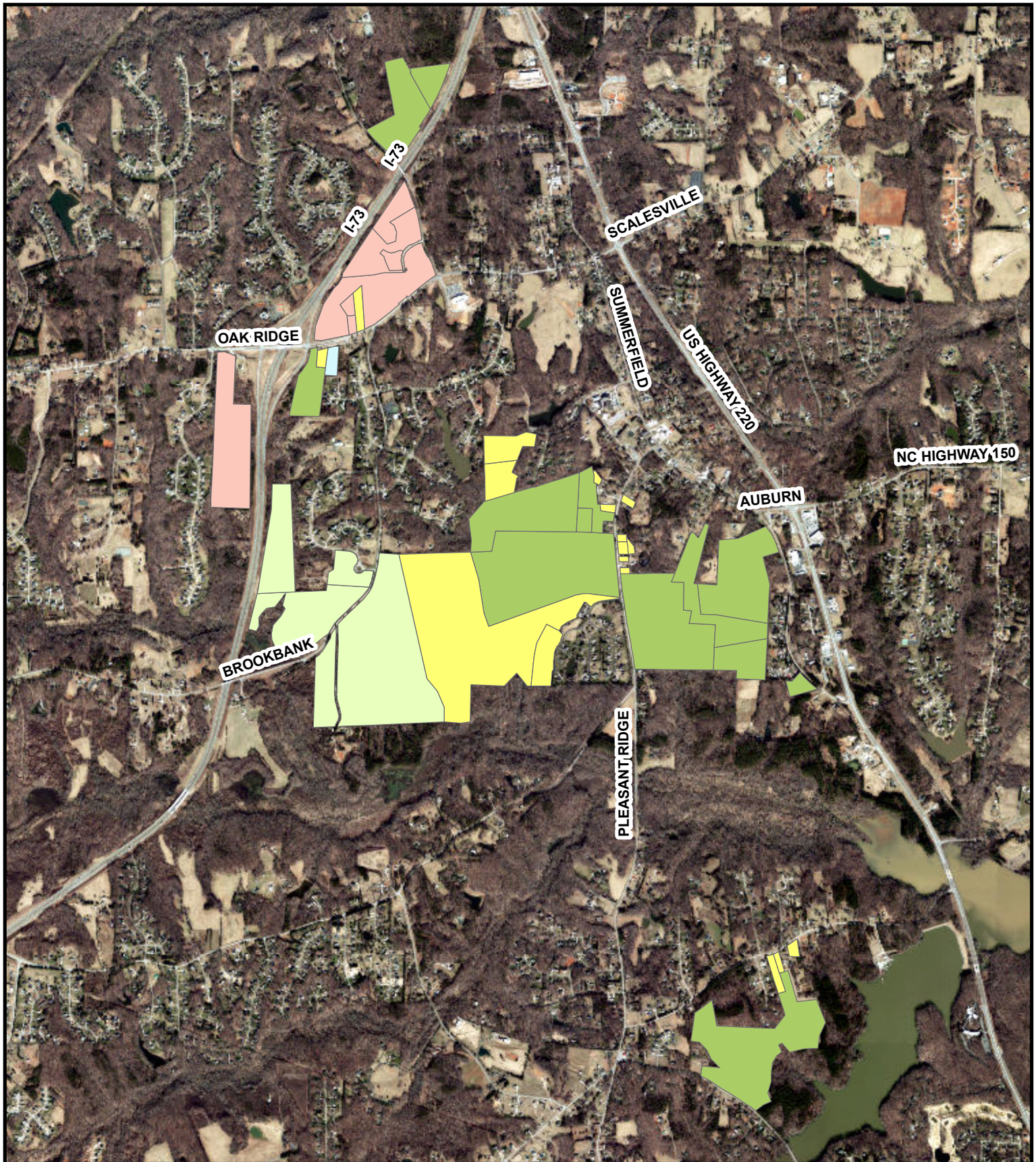


# Zonings Prior to De-Annexation



Date: 7/3/2024

1 in = 2,645 ft

0 1,250 2,500 5,000 Feet



Disclaimer: While every effort is made to keep information provided over the internet accurate and up-to-date, Guilford County does not certify the authenticity or accuracy of such information. No warranties, express or implied, are provided for the records and/or mapping data herein, or for their use or interpretation by the User.



## Summerfield Zonings

- AG - Agricultural
- OSR - Open Space Res
- RS - Single-family Res
- OI - Office/Institutional
- BN - Business